

**ENABLE DIGITALIZATION**

**ProcessGo Plus** solution

The Ultimate Integration Platform with BPMN

# Navigating Modern Enterprise Challenges

## Transform Obstacles into Opportunities for Growth



### Complex processes

The complex processes challenge can lead to reduced efficiency, increased operational costs, communication breakdowns, and difficulties in process optimization.



### Siloed System

Modern enterprises use a wide array of software solutions for different functions, such as CRM, ERP, and project management. Managing data and workflows across these systems can be challenging and time-consuming.



### Technology Evolution

The fast pace of technological innovation is a challenge for modern enterprises, as they must continuously adapt to new tools, systems, and best practices in order to stay competitive and maintain efficient operations.



### Collaboration

With teams becoming more distributed and remote, ensuring effective communication and collaboration across departments and functions is crucial.



### Scalability

Enterprises need to be agile in order to adapt to market changes and scale their operations accordingly, while maintaining process efficiency and performance.



### Decision-making

In order to remain competitive, businesses must leverage data to drive decision-making, optimize processes, and improve overall performance.

# Paving the Way for Business Process Excellence

## Empowering Enterprises with Streamlined Processes

### Process automation

Reduces manual and repetitive tasks, enabling employees to focus on higher-value work and increasing overall efficiency.

### Integration with existing systems

Seamlessly connects various systems and tools, allowing for streamlined data exchange and reduced data fragmentation.

### Scalability

Adapts to growing business needs, ensuring that processes can be easily updated or expanded as required.



### BPMN modeling and visualization

Offers a standardized graphical representation of processes for better understanding, communication, and collaboration among teams.

### Workflow optimization

Identifies bottlenecks, redundancies, and areas of improvement in processes to enhance overall efficiency.

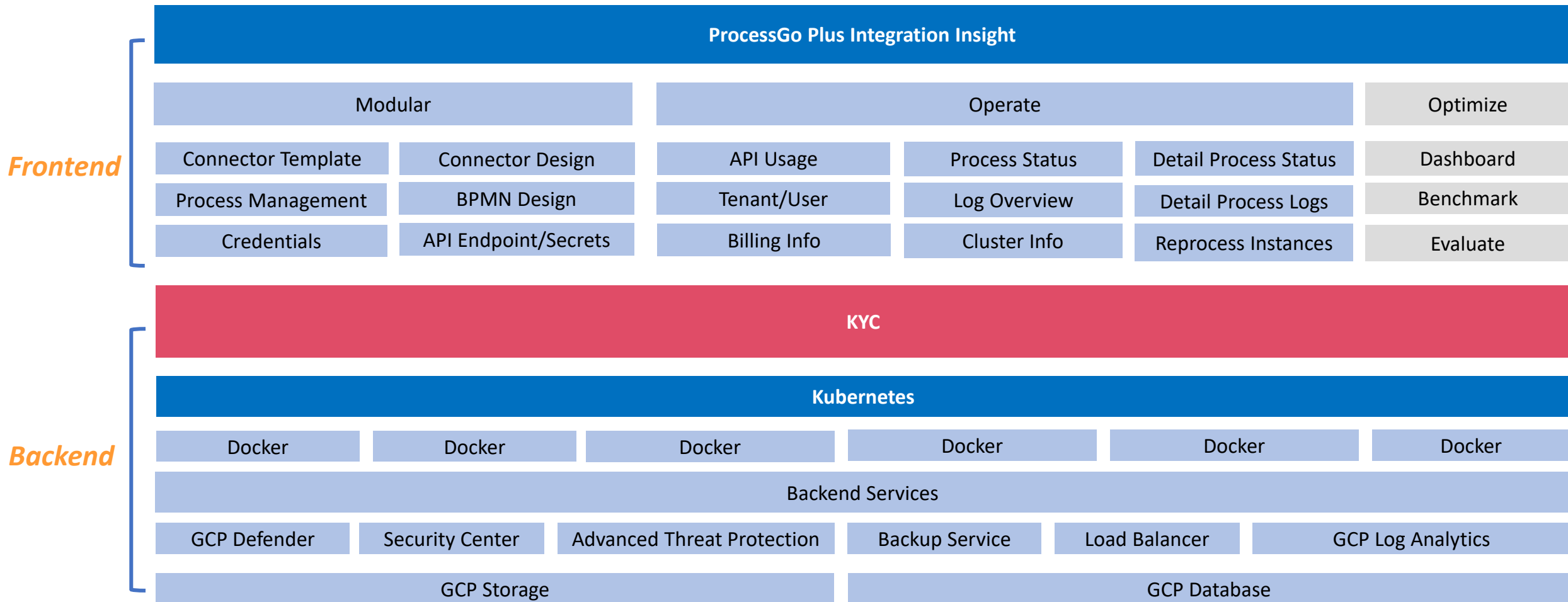
### Real-time analytics and monitoring

Provides insights into process performance and identifies areas for improvement, enabling data-driven decision-making.

# INOSSEM ProcessGo Plus Platform Architecture



Mastering the Art of Possibilities with ProcessGo Plus Platform



# Unleash the Power of Seamless Integration

## Design, Automate, and Improve

### Design and Connect

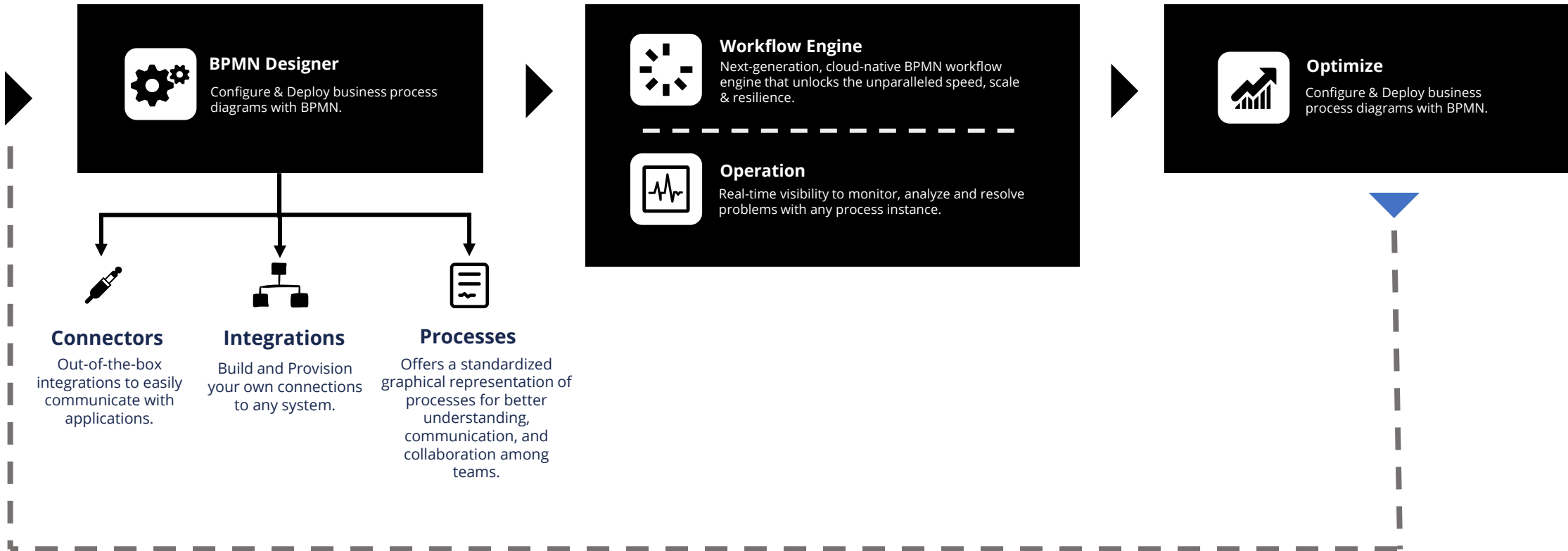
Business users collaborate with developers to model their end-to-end business processes deployed for automation.

### Automate and Monitor

People, systems, devices — orchestrate anything from end to end. Bring together your legacy systems, RPA bots, microservices, and more.

### Improve and Optimize

Make improvements in a continuous and collaborative cycle. Visual reports and heatmaps identify process improvements that can immediately be made.

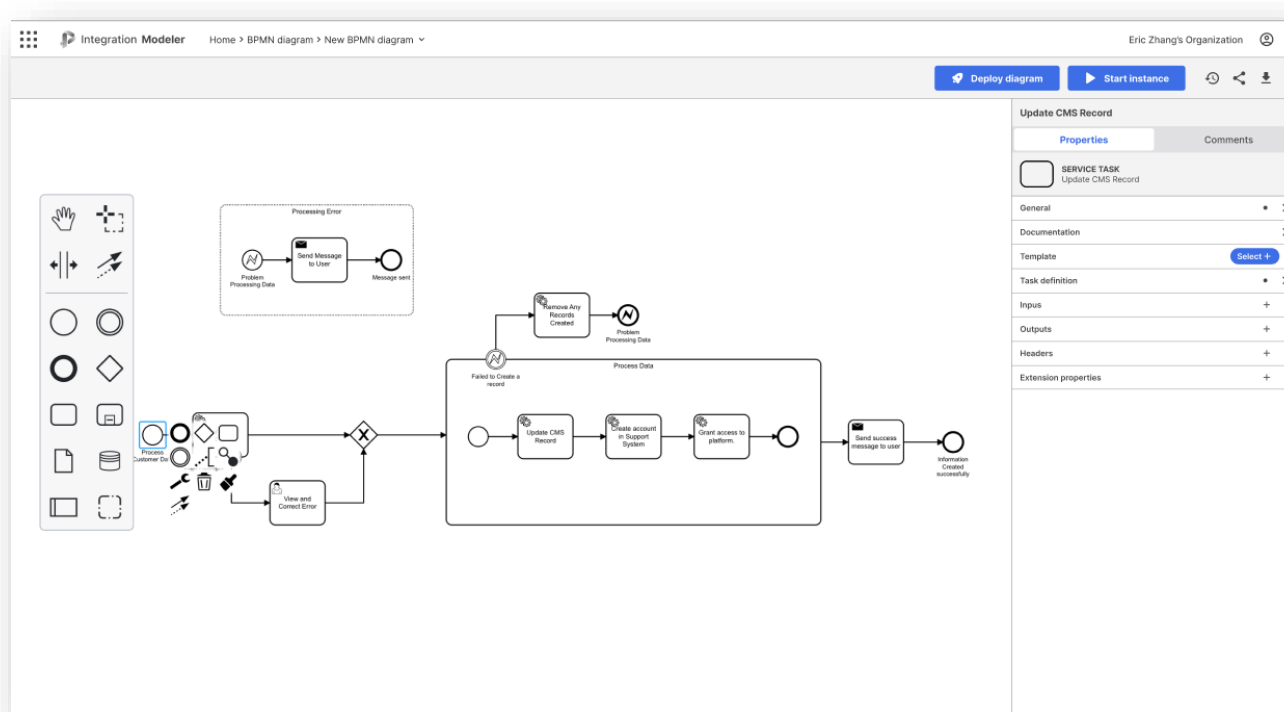


# Visualizing Success with BPMN

## Innovate with BPMN: Streamline, Visualize, and Transform

**ProcessGo Plus Integration Modular** plays a crucial role in modern business process management, empowering organizations to effectively design, analyze, and communicate their processes. With a focus on user experience and collaboration, these tools enable teams to work together to create clear and visually appealing BPMN diagrams that illustrate complex processes in an easily understandable manner.

The primary goal of these tools is to simplify the process of creating BPMN diagrams while adhering to the BPMN standard, ensuring consistency and interoperability across various systems and platforms. By offering a user-friendly interface, BPMN Modeling and Visualization tools allow users of varying skill levels to participate in process design and improvement, fostering a culture of collaboration and continuous improvement within the organization.

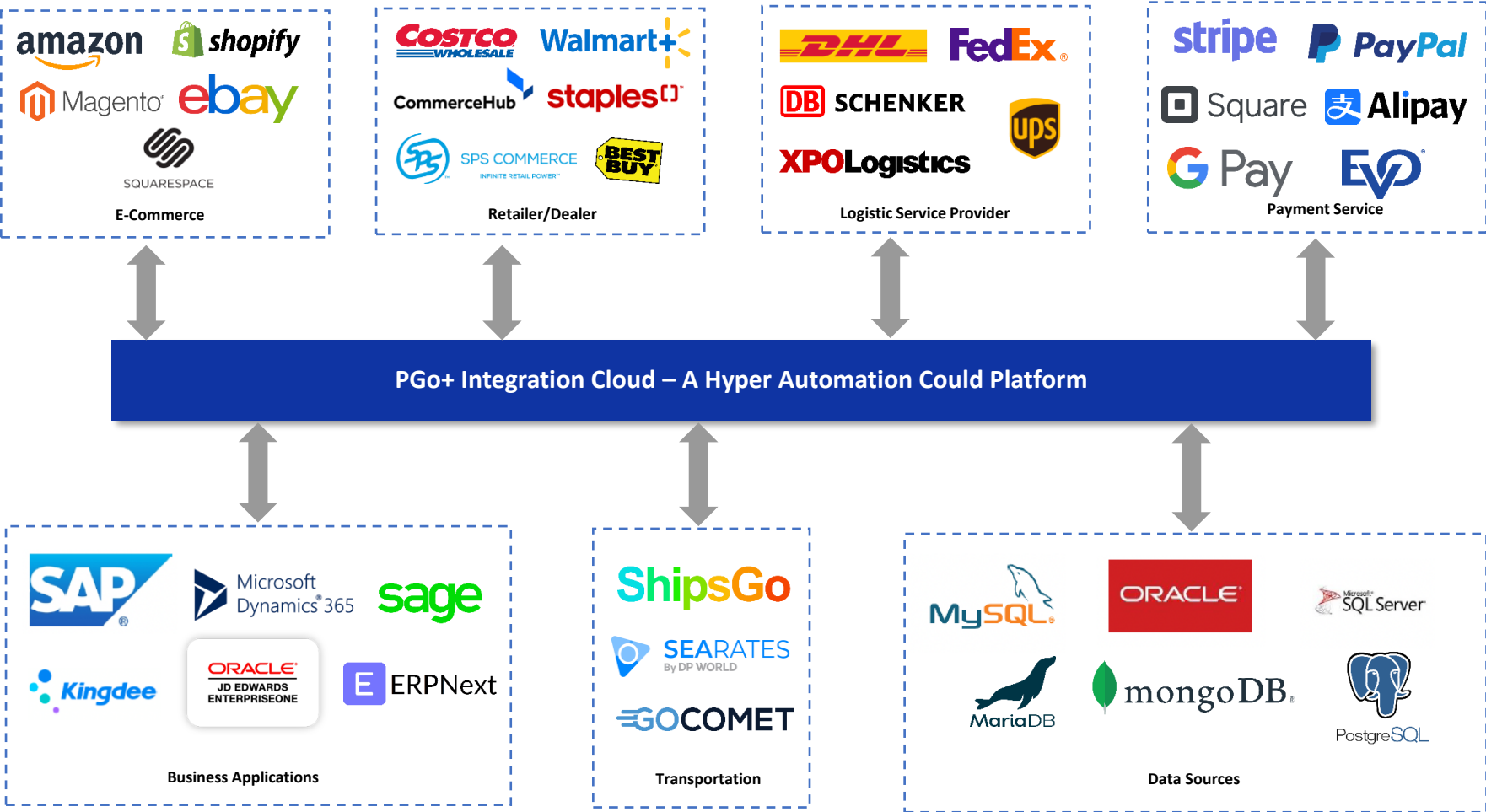


- **Drag-and-drop interface:** A user-friendly, intuitive interface that allows users to create and edit BPMN diagrams by simply dragging and dropping BPMN elements onto the canvas.
- **Built-in BPMN elements:** A comprehensive set of BPMN elements, such as tasks, events, gateways, and swimlanes, that users can use to create various process diagrams.
- **Collaboration and sharing:** Tools that enable users to collaborate on BPMN diagrams in real-time, share them with team members, and manage version control.
- **Validation and error checking:** Automated validation and error checking to ensure that BPMN diagrams adhere to the BPMN specification and best practices.
- **Import and export capabilities:** The ability to import existing BPMN diagrams from other tools or formats and export them to various formats, such as XML, SVG, or PDF, for easy sharing and documentation.
- **Integration with other tools:** Seamless integration with various business process management, workflow automation, or project management systems, enabling users to leverage the BPMN diagrams within the broader context of their organization.

# Boundless Connectivity Across Systems

## Bridging the Gap Between Technologies

Connect to all the things and Orchestrate processes across all endpoints



# Boundless Connectivity Across Systems

## Bridging the Gap Between Technologies

### Low Code Development

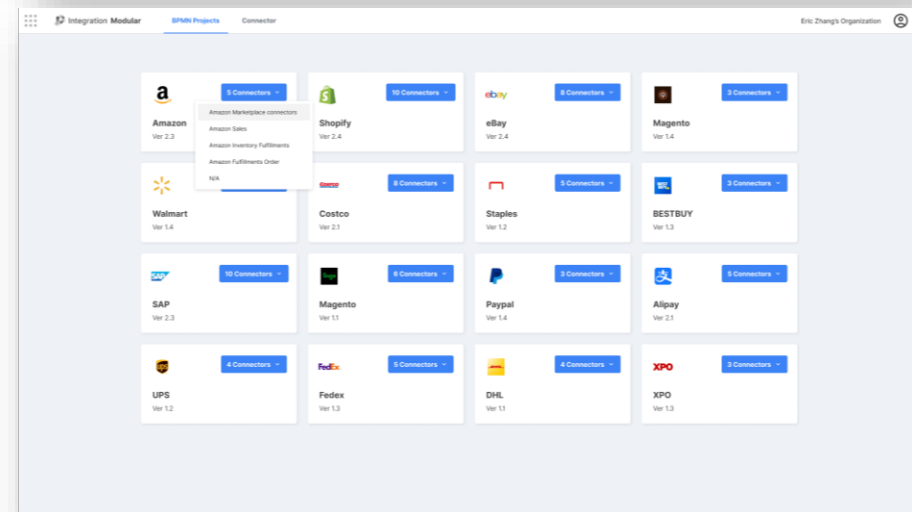
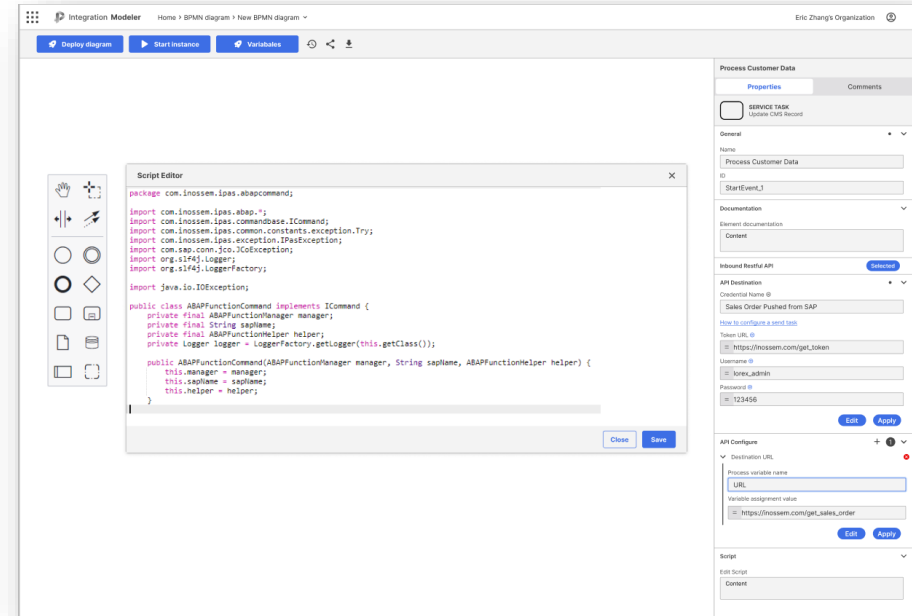
Build and deploy your own low-code scripts and connectors for any technology in minutes using the Integration Framework. Custom scripts are perfect for organizations that are struggling with legacy systems, homegrown software, or maintenance-heavy RPA bots.

**Script and Connector Templates** allow developers to define properties for reusable Scripts and Connectors that both technical and business users can leverage in their processes.

The **Connector SDK** provides a simple way to implement custom Connectors in SaaS, Self-Managed, and hybrid environments.

### Build Once & Reuse

Make custom Scripts and Connectors available, so anyone using PGo+ System Integration Tool can add them to their business processes. The **PGo+ Modular** makes it easy to find Connectors and Scripts, use them in BPMN process models, and configure their properties.





# Revolutionizing Process Monitoring

## Harness the Power of Data for Business Success

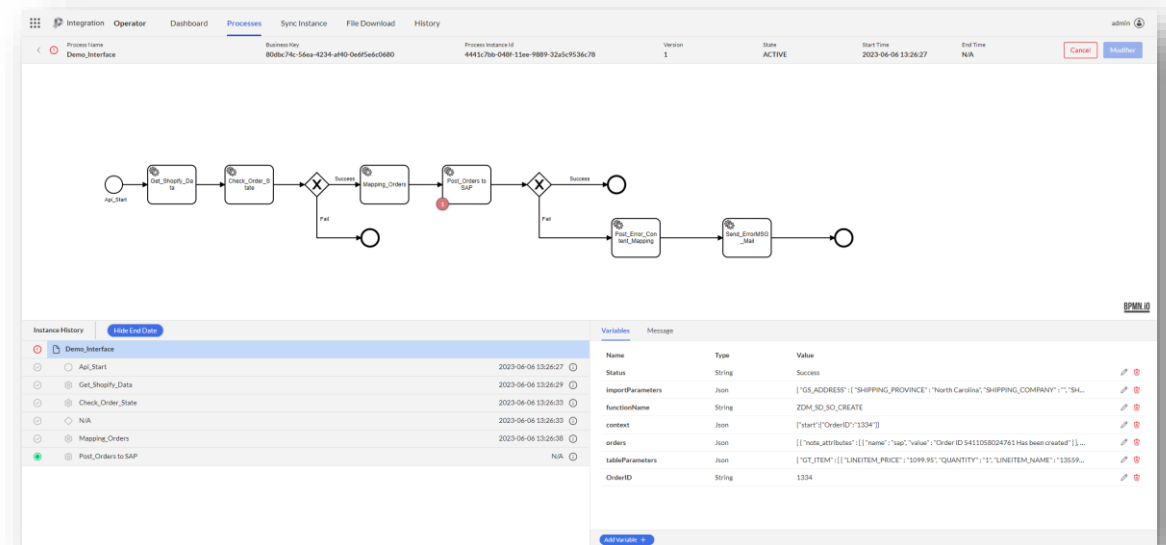


### Monitor

To observe the operational health of historical and current processes in a single place, you can use a process monitoring and management tool that collects and aggregates data from various sources. This tool should be able to analyze and visualize data in real time, which can help you quickly identify issues and take corrective actions.

### Analyze

These tools can help you drill down and uncover incidents or find where instances are stuck. By combining process models and operational data, you can get a better understanding of your processes and identify areas for improvement. You can also use visual cues such as colors and icons to highlight process inefficiencies and bottlenecks.



# Revolutionizing Process Monitoring

## Harness the Power of Data for Business Success

### Resolve

Our platform has the ability to automatically retry instances that failed due to temporary errors without losing any in-flight or historical data. It should also provide you with real-time alerts and notifications for critical issues and allow you to intervene and resolve issues manually if needed.

- **Error details:** The process monitor should provide details about the error, such as the error message, stack trace, and the affected data elements. This information can help the user diagnose the issue and determine the appropriate corrective action.
- **Data correction:** If the error is due to incorrect or missing data, the process monitor should allow the user to correct the data values directly from the monitor interface. This can be done by providing a form or data entry field where the user can update the affected data elements.
- **Process retry:** If the error can be resolved by retrying the process with the corrected data values, the process monitor should provide a "retry" button or similar functionality that allows the user to restart the process. The monitor can also provide an option to retry the process with the same data values or with updated values.
- **Error resolution tracking:** Once the user has resolved the error and retried the process, the process monitor should track the resolution status and provide a history of error occurrences and resolutions. This information can be useful for process improvement and optimization.

The screenshot displays the Inossem process monitoring interface. At the top, there's a navigation bar with tabs for Integration, Operator, Dashboard, Processes, and ChartBoard. The current view is for a process named 'Marvis\_856\_shipping notice'. The process details include Business Key, Process Instance Id, Version 1, State COMPLETED, Start Time, and End Time. Below this is a process flow diagram showing a sequence of tasks: 'Marvis\_856\_Data\_From\_SAP\_Mapping', 'Marvis\_856\_Generate\_File\_to\_jpg', and 'Marvis\_856\_Send\_File\_To\_Marvis\_FileServer'. A decision diamond follows, with a 'Success' path leading to an end node and a 'Fail' path leading to a 'Marvis\_856\_Error\_Mapping' task, which then leads to a 'Marvis\_856\_Error\_Message' task and an end node. Below the diagram is an 'Instance History' table with columns for Instance Name, Status, and End Date. The table shows a list of instances, with the first one being 'Marvis\_856\_shipping notice' and the others being 'N/A'. To the right of the instance history is a 'Variables' table with columns for Name, Type, and Value. The variables table lists various data elements such as File, Status, Warehouse, ContainerNumber, context, CarrierWaybill, SAPDN, ExpectedDate, Lines, and ErrorMessage.

Instance Name	Status	End Date
Marvis_856_shipping notice	Completed	2023-10-11 15:48:03
N/A	N/A	2023-10-11 15:47:51
Marvis_856_Data_From_SAP_Mapping	Completed	2023-10-11 15:47:52
Marvis_856_Generate_File_to_jpg	Completed	2023-10-11 15:47:58
Marvis_856_Send_File_To_Marvis_FileServer	Completed	2023-10-11 15:48:03
N/A	N/A	2023-10-11 15:48:03
N/A	N/A	2023-10-11 15:48:03

Name	Type	Value
File	String	/home/inossem/mounted/sallun/marvis/856outbound/Marvis_856_20231016075537.txt
Status	String	Success
Warehouse	String	0003002010
ContainerNumber	String	OOCU8095153
context	Json	{ "start": { "Warehouse": "0003002010", "ContainerNumber": "OOCU8095153", "CarrierWaybill": "...
CarrierWaybill	String	OOLU2142822340
SAPDN	String	500096199
ExpectedDate	String	2023-11-16
Lines	Json	{ "MSPN": "5546822V", "CustomerPONumber": "Aug_2023_702", "UoM": "EA", "QtyOrdered": "88.0...
ErrorMessage	String	File not found: /home/inossem/mounted/sallun/marvis/856outbound/Marvis_856_20231016075537.txt

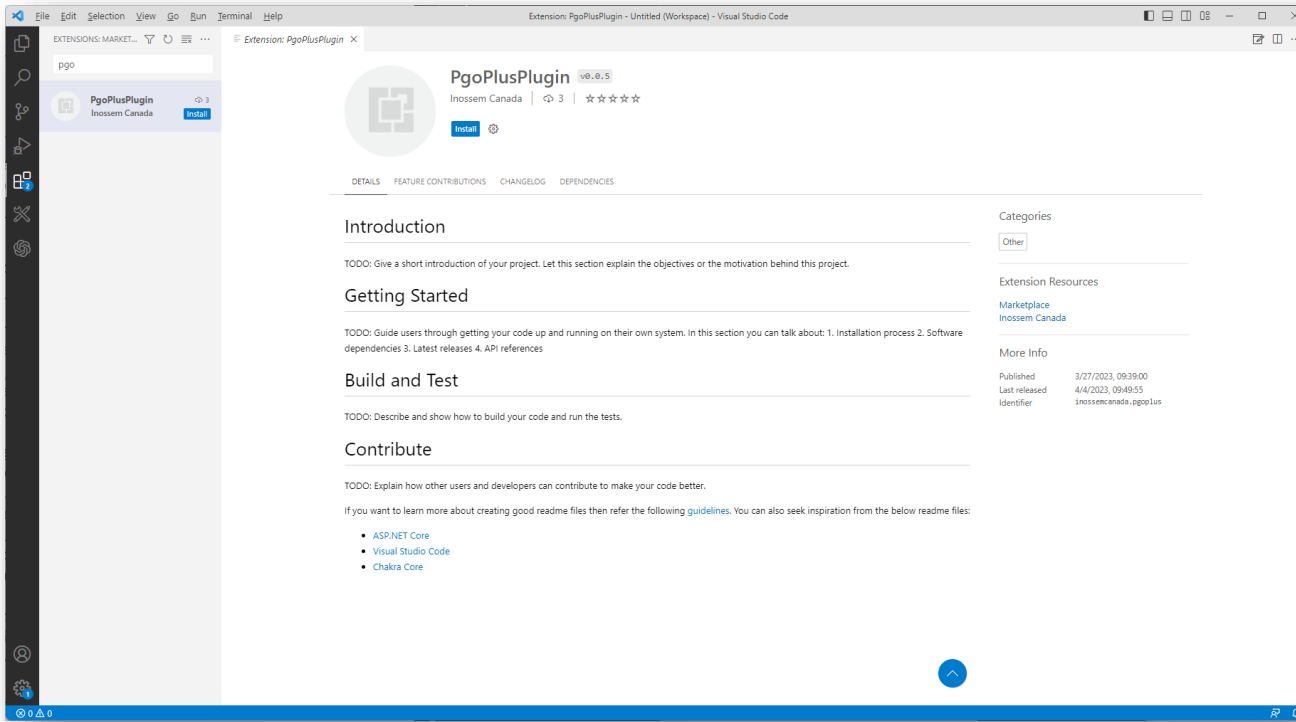
# Embrace Growth with Unmatched Scalability

## Evolve and Expand Effortlessly with Our Solution

### Remote Development:

Visual Studio Code (VS Code) with Remote Development is a powerful tool that can help you easily work with any source code repository, environment, and other tools in your dev toolkit. With Remote Development, you can work with a remote machine or container as your development environment without leaving VS Code.

This extension allows you to work with a remote machine or container as your development environment. You can write, run, and debug your code on a remote machine without leaving VS Code.



**1. Install the Remote Development extension:** Install the Remote Development extension in VS Code from the VS Code Marketplace.

**2. Connect to a remote machine or container:** Connect to a remote machine or container using SSH, Docker, or another protocol. You can do this from within VS Code or from the command line.

**3. Open a remote workspace:** Once you're connected to the remote machine or container, you can open a remote workspace in VS Code. This will give you access to all the tools and extensions installed on the remote machine or container.

**4. Work with source code repositories:** You can work with any source code repository that is installed on the remote machine or container, including Git, SVN, Mercurial, or Perforce. You can use the built-in Git integration in VS Code or install extensions for other source code repositories.

**5. Work with other tools and environments:** You can work with other tools and environments in your dev toolkit, such as issue tracking, project management, and testing tools. You can install extensions in VS Code to integrate with these tools.

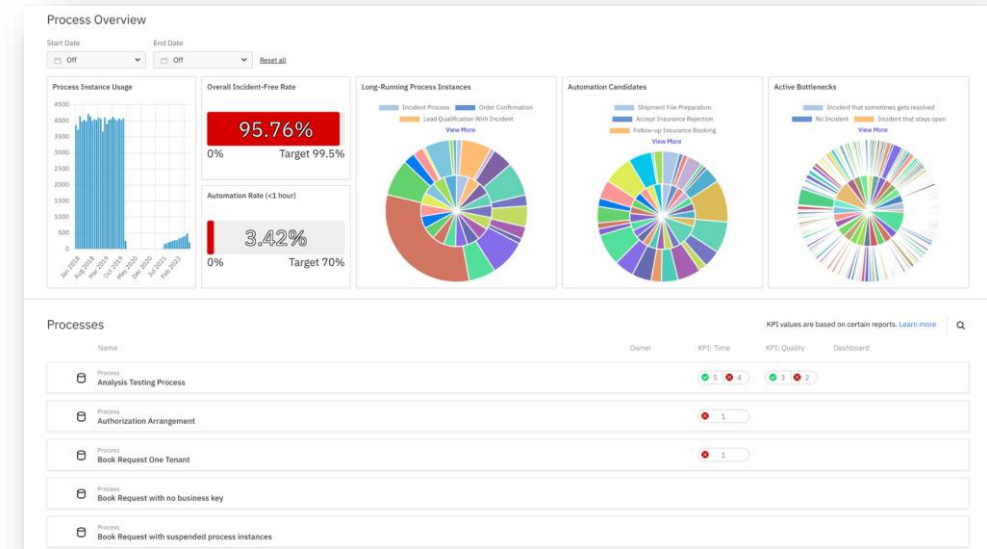
By using VS Code with Remote Development, you can easily work with any source code repository, environment, and other tools in your dev toolkit. This can help you streamline your development workflows and improve your productivity.

# Beyond Integration - A World of Possibilities

## Unleash Innovation with Advanced Platform Features

### Benchmark

To benchmark the performance of your processes, you can establish Key Performance Indicators (KPIs) that measure what matters most. KPIs are metrics that help you track the progress of your processes and determine whether they are meeting their objectives. Once you have established KPIs, you can create and share dashboards with process owners so they can explore and discover areas for improvement. By establishing KPIs and creating dashboards, you can benchmark the performance of your processes and identify areas for improvement. This will help you optimize your processes, reduce costs, and enhance customer satisfaction.



### Here are some steps to establish KPIs and create dashboards for your processes:

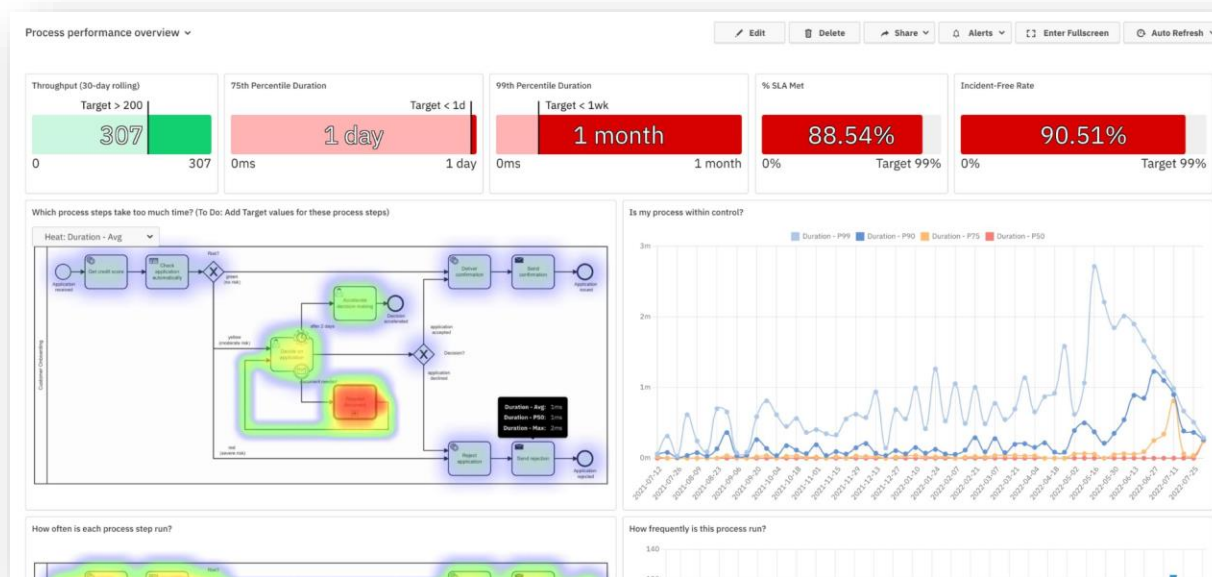
- **Identify your process goals:** Determine what your process is trying to achieve and what outcomes are important to your organization. This could include reducing costs, improving quality, increasing efficiency, or enhancing customer satisfaction.
- **Define KPIs:** Based on your process goals, identify the KPIs that will help you measure progress towards those goals. KPIs could include metrics such as cycle time, throughput, error rate, or customer satisfaction scores.
- **Gather data:** Collect data on your process performance from various sources, such as your process monitoring system, ERP system, CRM system, or other data sources.
- **Create dashboards:** Use a data visualization tool such as Tableau, Power BI, or QlikView to create dashboards that display your KPIs in real-time. Make sure the dashboards are easy to understand and relevant to the audience.
- **Share dashboards:** Share the dashboards with process owners, stakeholders, and other relevant parties so they can explore the data and identify areas for improvement. Encourage feedback and collaboration to drive continuous process improvement.

# Beyond Integration - A World of Possibilities

## Unleash Innovation with Advanced Platform Features

### Evaluate

To evaluate how a process performs consistently over time, you can use a process monitoring system that collects and analyzes data from your processes. The monitoring system should be able to track performance metrics over time and provide visualizations that highlight trends and patterns.



- **Identify the process to monitor:** Determine which process you want to monitor and which metrics are essential to track. This could include cycle time, throughput, error rate, or other relevant performance indicators.
- **Collect data:** Collect data on your process performance over time from your process monitoring system, ERP system, CRM system, or other data sources.
- **Visualize the data:** Use a data visualization tool such as Tableau, Power BI, or QlikView to create a dashboard that displays the data in a way that is easy to understand and relevant to the audience.
- **Monitor trends:** Monitor trends and patterns in the data over time. Look for areas where performance is improving or declining, and identify the root causes of any issues.
- **Combine data from several processes:** If you have multiple related or interconnected processes, you can combine data from several processes in a single dashboard. This will allow you to identify patterns and trends that span multiple processes.

# Embrace the Future with Our Integration Platform

## Elevate Your Business Processes Today

*Success = people + processes + platform*

Enterprise-wide automation relies on a combination of people, processes, and a platform. Each factor has a significant effect on your automation outcomes. Successful automation requires you to address each element.

### Automation Tool or Automation Platform?

Though they may seem the same, automation platforms and tools have contrasting characteristics that can be the difference between efficient enterprise-wide adoption and unorganized, disparate automation efforts.



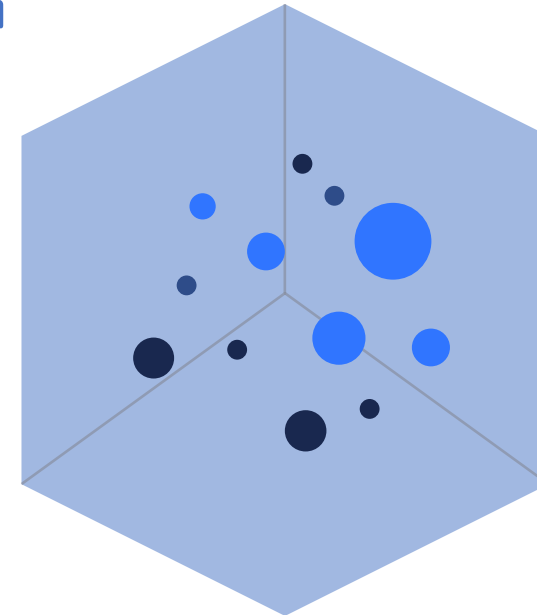
Tools are practical only for individual and point automation. They do not provide the connection and management capabilities needed for enterprise-wide automation.



Platforms provide a unified foundation for multiple people to automate consistently. They deliver the means for efficiently managing and sharing automation content across an organization.



People



Process



Platform

# Phoenix Paper, a local large Pulp & Paper company

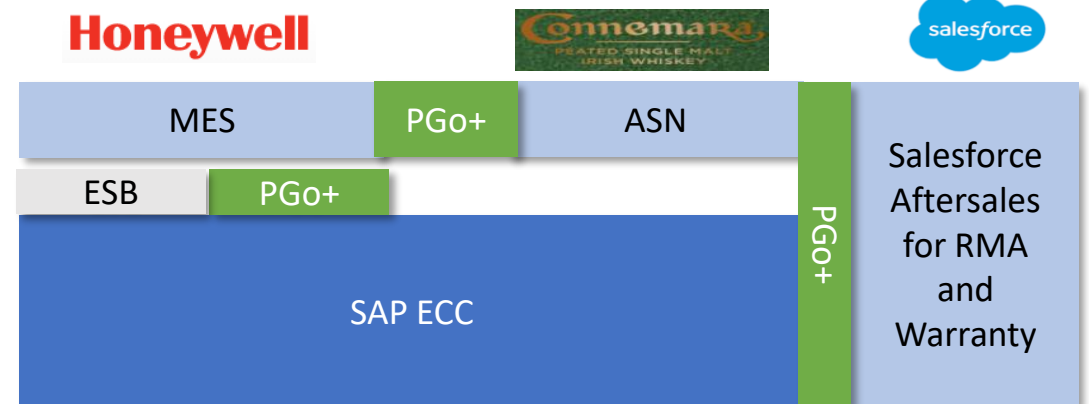
Global Upstream Supply Chain from China to North America



Phoenix Paper Wickliffe LLC, is a subsidiary of Shanying International – a leading global pulp & paper company. Shanying is one of the largest industrial paper-making enterprises and extra-large packaging board manufacturers in China. Phoenix Paper is the first U.S. mill purchased by Shanying in September of 2018. Once fully optimized, the mill will produce approximately 300,000 tons of product per year.

Shanying has established subsidiaries in multiple Providences in China. It has companies in the USA, UK, Germany, Netherlands, Japan, Australia, and Hong Kong. Shanying has an annual yield of 3,050,000 tons of paper and over 10 billion ft<sup>2</sup> cardboard and paper carton, ranking it among the top within the industry.

The Wickliffe, KY mill will expand to include a new recycling facility! Our \$200 million investment is projected to take approximately 18 months to build and once completed, will process recycled paper – creating an additional 150 jobs.



# Created in China, Made in USA

## Global Governance and Operation Enabled by Digital Solution

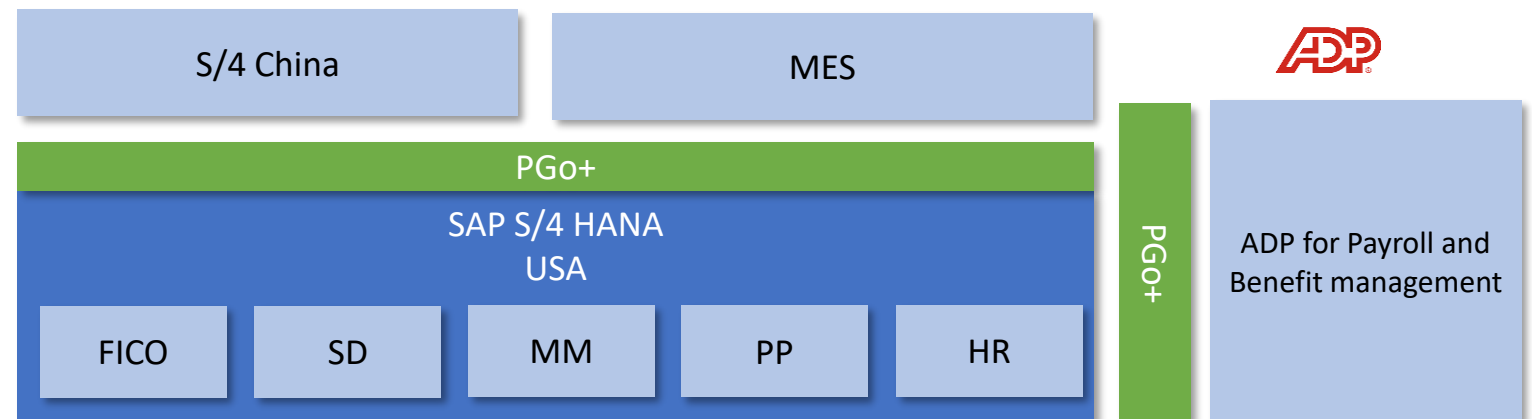


China Jushi Co., Ltd. is a core enterprise in the fiberglass business division of China National Building Material Company and specializes in the manufacture and sales of fiberglass and its finished articles as the main business. China Jushi is one of the largest enterprises in the new material industry of China. Through many years of efforts, China Jushi has become the leading enterprise in the fiberglass industry with sound governance, distinct strategy, good assets, excellent culture, lean management, advanced technology and complete sales network.

In light of the global trade war, Jushi decided to invest a mill in South Carolina, US. As the largest local factory, the mill has the annual capacity of 80,000 tons and employs over 300 employees locally. The SAP S/4 HANA was implemented in early 2019 to facilitate the operation of the new business.



<https://www.jushi.com/en>







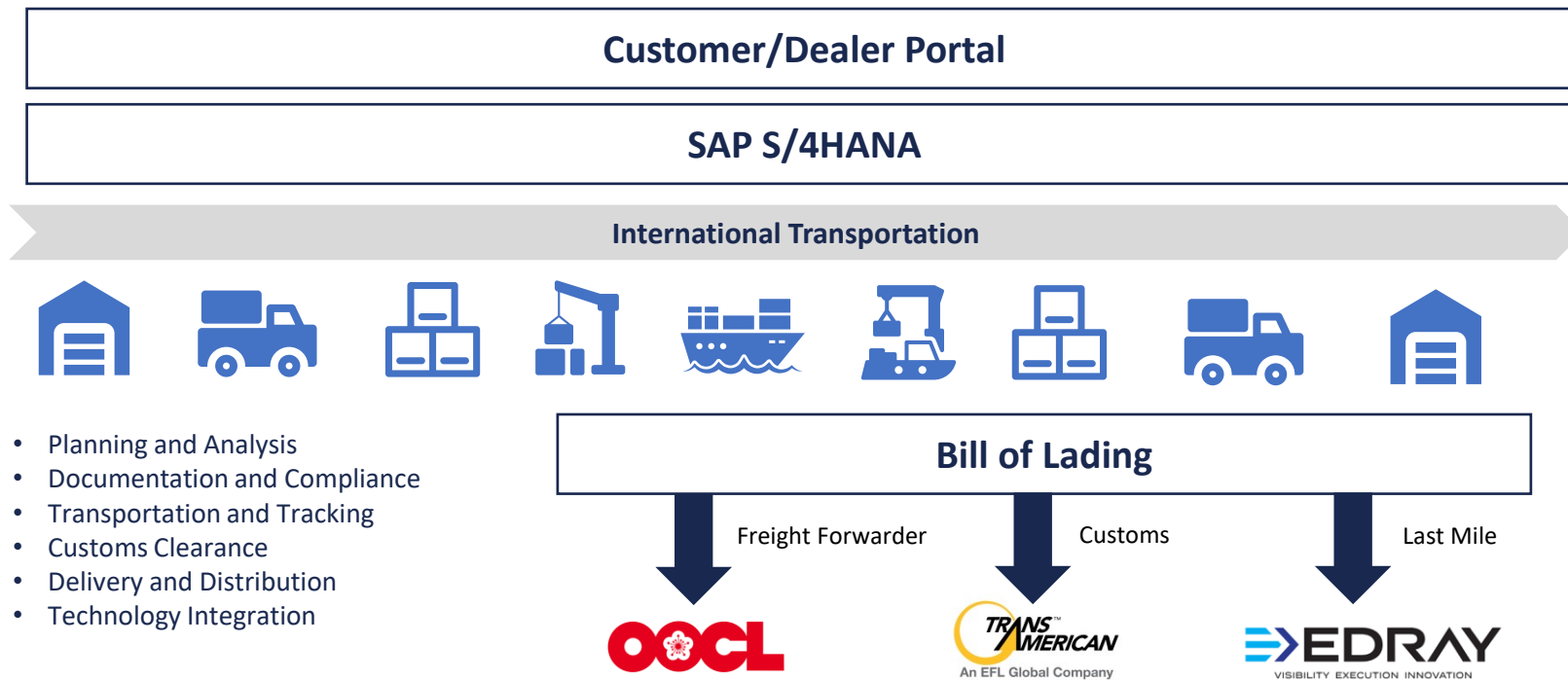
## Overview

Sailun Tire is a renowned tire manufacturing company with a global footprint, renowned for its innovative approach, quality products, and exceptional customer service. Established in the early 2000s, the company has carved a niche in the tire industry, offering a diverse range of products that cater to various segments, including passenger cars, trucks, and specialty vehicles.

**Consumer Goods**  
**\$13B in revenue**  
**10,000+ employees**

## Solution

Since 2022, Inossem has assisted Sailun Tire in establishing its ERP system in North America. In addition, Sailun Tire has utilized the PGo+ Integration Cloud platform to access "white glove" turnkey services, encompassing comprehensive EDI management, and complete data movement and governance administered through the cloud.



- Planning and Analysis
- Documentation and Compliance
- Transportation and Tracking
- Customs Clearance
- Delivery and Distribution
- Technology Integration



# Omni-channel Strategy Executed by ProcessGo Plus

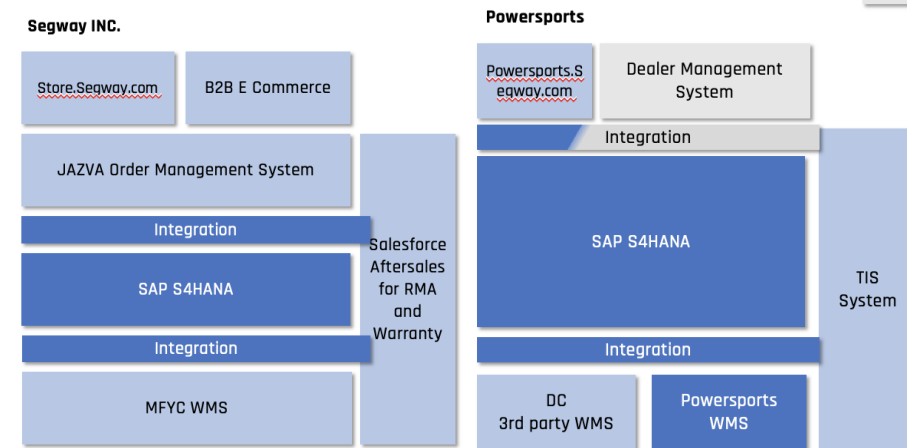
## Fully Integrated Supply Chain



When Tech Meets Art  
 Your Solution to Urban Commuting



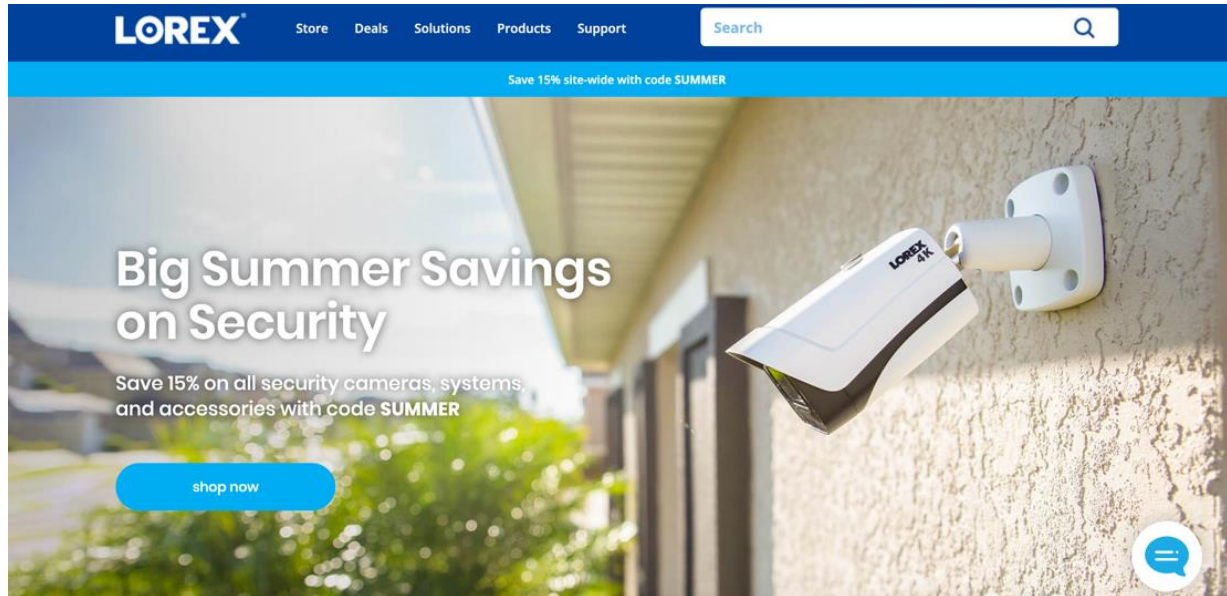
Segway is the worldwide leader in personal transportation. Founded in 1999 by renowned inventor, Dean Kamen, Segway has always strived to provide high-quality, safe, and reliable products for its customers. Segway-Ninebot is a global enterprise in the field of intelligent short-distance transportation and service robots. The company's businesses are international, selling products in more than 80 countries and regions. Ninebot's corporate valuation has exceeded \$1.5 billion USD.



# Digital Backbone Driven by S4HANA, Credential with US and CA

## Automated Order to Cash along full distribution Channel

**INOSSEM**



Lorex is a reputable manufacturer and distributor of security camera systems and related technology. Based in North America, Lorex specializes in providing a wide range of surveillance solutions, including video security cameras, digital video recorders (DVRs), network video recorders (NVRs), and associated accessories. The company is renowned for its commitment to innovation and user-friendly technology, making it a popular choice for homeowners and businesses seeking to enhance their security and surveillance capabilities.



<https://www.lorextechnology.com>



### Indoor Security

View your world with the ultimate in home security systems.



### Outdoor Security

Garages are easy targets. A Lorex home security system can help.



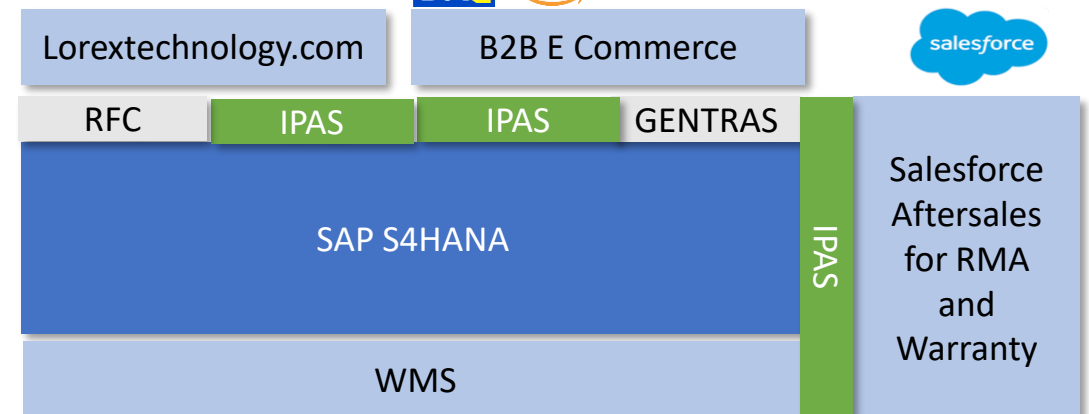
### Pet Monitor

See exactly what your four-legged friends get up to while you're away.



### Elderly Monitor

Monitor loved ones' comfort and safety, even when you can't be there

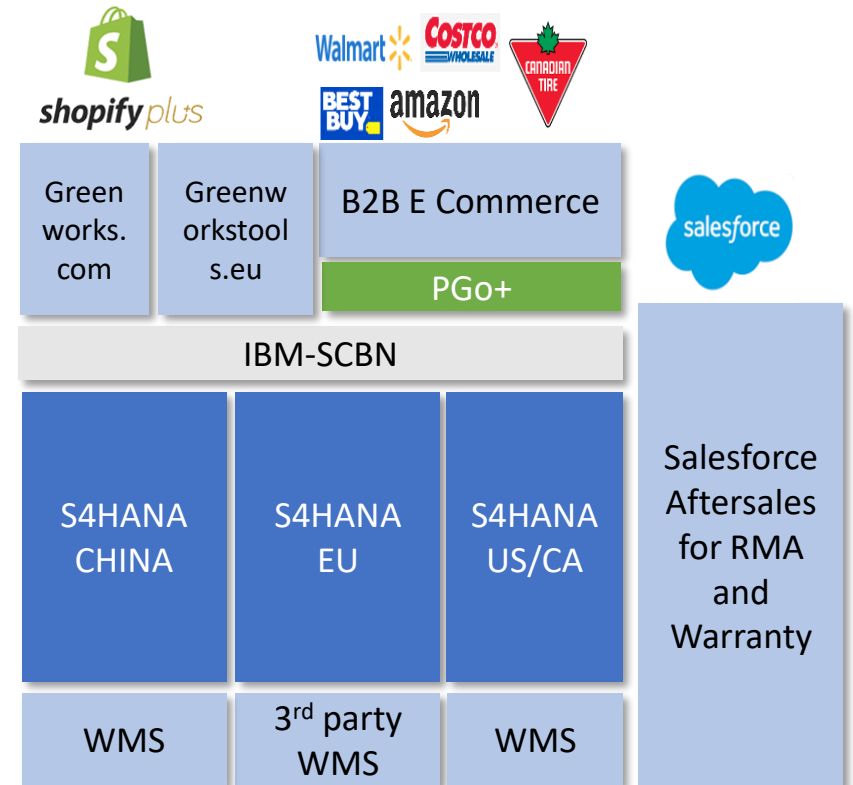
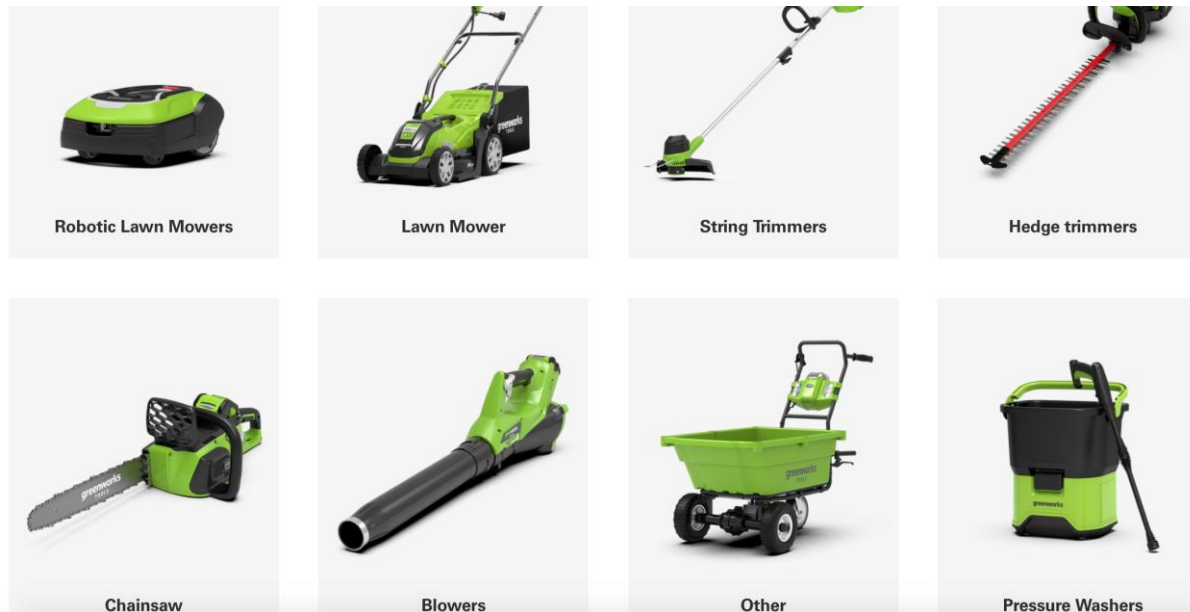


# Greenworks Tools, A leading gardening equipment provider in US

## Global Supply Chain from China to North America and European

GWT was founded in 2002 and has 2 complete machine assembly plants, 4 parts supporting plants, and more than 5,000 employees. It is an international first-class garden tool R & D and manufacturing company. GWT's major markets are Europe and North America, and it successfully created its own brands, "Greenworks, Powerworks", which has won praise from customers in the United States and European markets. In the process of GWT's global operation, it has implemented multi-accounting standards group financial management and control capabilities. The efficient integration of transnational supply chains and the construction of global management standards and compliance are the only ways for GWT to develop rapidly and steadily on a global scale. GWT implements European companies as the entry point for the establishment of global control standards, distributes the blueprints of business templates, and gradually completes the deployment and business connection of other affiliated companies in Europe and North America. Finally, it implements solutions in production bases and headquarters in China.

**GLOBE GROUP**  
LEADING IN BATTERY POWERED EQUIPMENT



# Wanhua Chemical America

## Increase supply chain efficiency and reduce cost through integration

Wanhua Chemical is among the global leading suppliers of chemical innovative products. Relying on the continuous innovation, commercialized facilities and efficient operation, the company provides customers with more competitive products and solutions. Wanhua Chemical has always been adhering to innovation and optimizing industrial structure. Its business covers polyurethanes, petrochemicals, performance chemicals and emerging materials. The industries include homeware and furniture, sports and leisure, automobiles and transportation, building and construction, electronics and electrical appliances, personal care, and green energy.

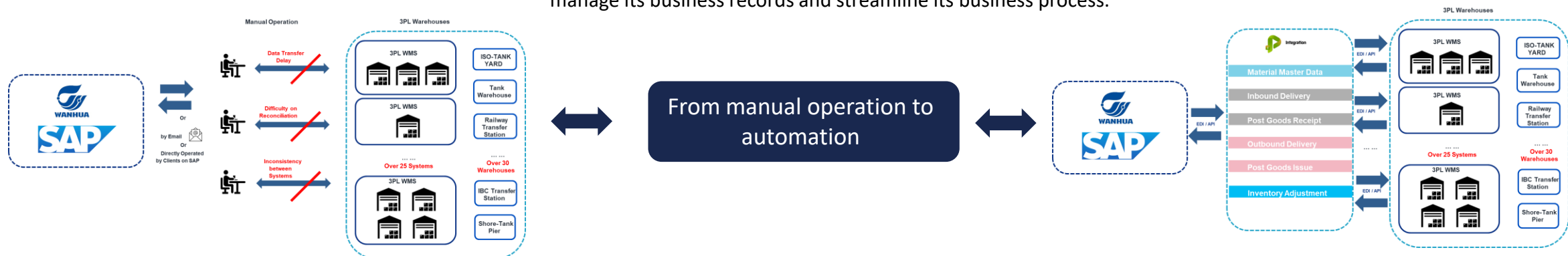
2005, Wanhua has established its business in North America. With years hyper growth, Wanhua Chem America has already been a key player in North America market.



Wanhua Chem America has about 30 warehouses for tanks and packages. Wanhua Chem America imports products from Asia and Euro, then sells in U.S., Canada, and Mexico. Without the integrated process with 3rd party logistic providers, Wanhua spends huge efforts to communicate with 3rd party logistic vendors in email and calls. In the meanwhile, the data recorded in Wanhua's system are not aligned with what recorded in the warehouses.

Through the EDI integration project, we also helps the client to identify the business/system improvement opportunities and solutions. By implementing the solutions, Wanhua is improving its business performance in supply chain management step by step.

During the EDI integration project, we also helps the client to build a custom/bounded solution on top the SAP system to manage its business records and streamline its business process.



THANKS FOR YOUR  
ATTENTION

**INOSSEM**

INNOVATION | NETWORKING | OWNERSHIP